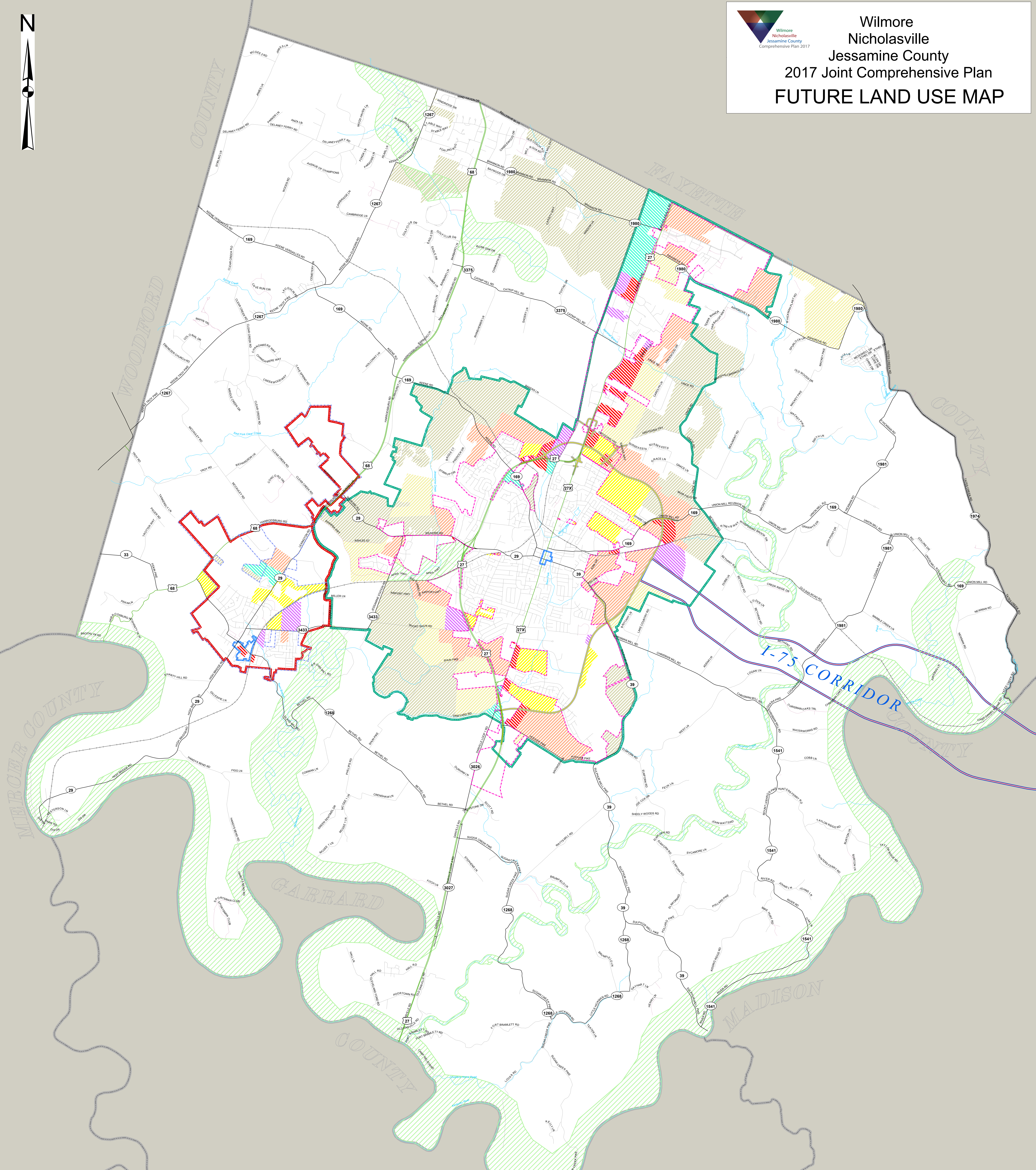


Wilmore  
Nicholasville  
Jessamine County  
2017 Joint Comprehensive Plan  
**FUTURE LAND USE MAP**



**LIMITATION OF LIABILITY:** The City of Nicholasville, City of Wilmore, and Jessamine County Governments have no reason to believe that there are any inaccuracies or defects in information incorporated in this work, but they make no representations of any kind, including, but not limited to, the warranties of merchantability or fitness for a particular use, nor any such warranties to be implied, with respect to the information of data furnished herein.



- |                                |                            |                                      |              |                            |
|--------------------------------|----------------------------|--------------------------------------|--------------|----------------------------|
| Future Very Low Residential    | Future Commercial          | City of Nicholasville                | Local Road   | Future Eastern By-Pass     |
| Future Low Residential         | Future Industrial          | City of Wilmore                      | Private Road | I-75 Connector Corridor    |
| Future Medium Residential      | Future Professional Office | Nicholasville Urban Service Boundary | KY Highway   | Streams                    |
| Future High Residential        | Conservation               | Wilmore Urban Service Boundary       | US Highway   | Downtown Business District |
| Future High Duplex Residential | See Current Land Use Map   |                                      | Railroad     |                            |